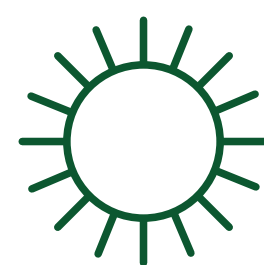


## > What does a social farmer know?



### Principles of Multifunctional Agriculture & Social Farming

*What are the basics?  
Why does M.A. exist?  
What are the benefits?*



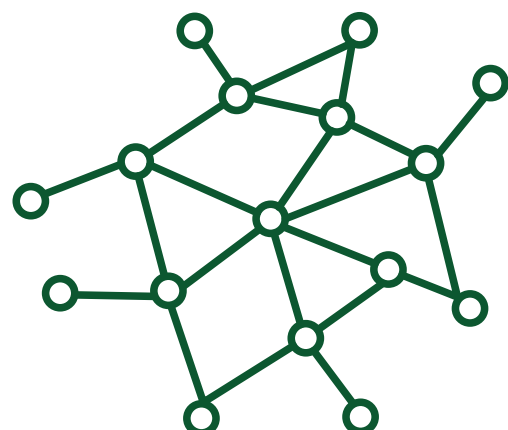
### Regulations & Bureaucracy

*How does it work in every country?  
What are the support at regional,  
national, EU levels?*



### Teaching & Psychological Approaches

*How to deal with people with  
disabilities, special needs, children...*



### Networking & other Good Practices

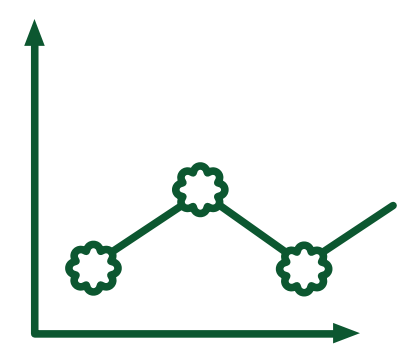
*What are the good practices around?  
Which collaborations would be beneficial?*

## > how does a multifunctional farmer look like?



### Is receptive of the environment around

*Stays up-to-date with relevant news,  
gets a wide range of information...*



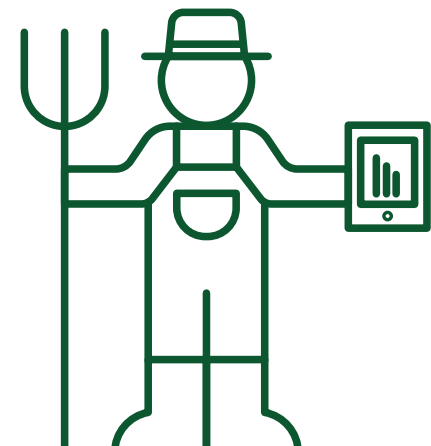
### Can read data

*Is able to read statistics and data,  
analyze scientific research, is critical  
of the information received...*



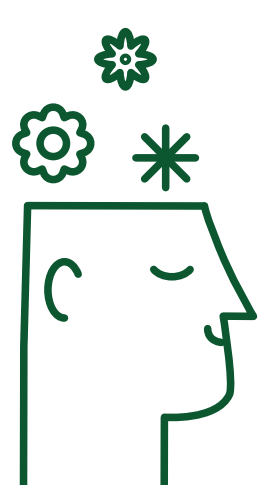
### Creates collaboration and networking

*Joins cooperatives and associations,  
collaborates with other farmers...*



### Is a great farmer

*Becomes a specialist in the agricultural field  
of interest, proves knowledge of the business...*



### Is critical

*Challenges the state of the art, seeks for further  
solutions, develops an independent thinking ...*